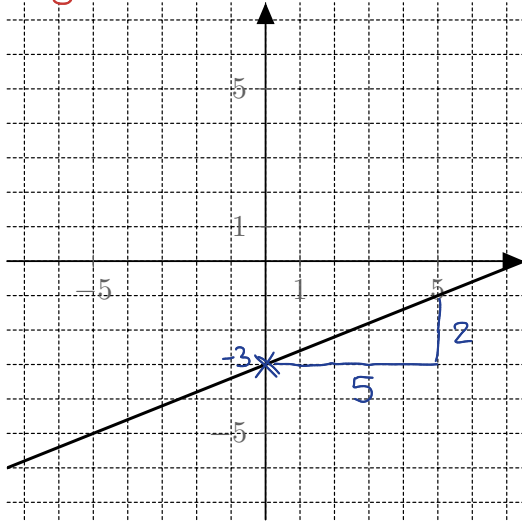


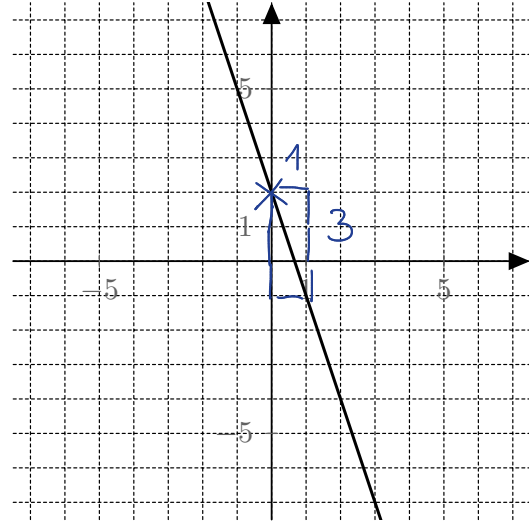
3.16

Déterminer les fonctions associées à chacune des droites suivantes.

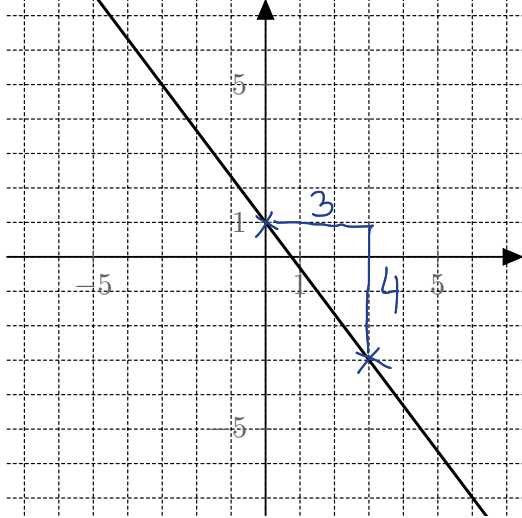
$$f(x) = \frac{2}{5}x - 3$$



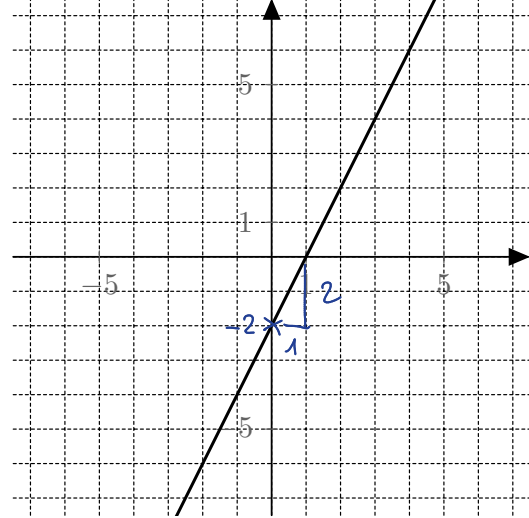
$$f(x) = -3x + 2$$



$$f(x) = -\frac{4}{3}x + 1$$

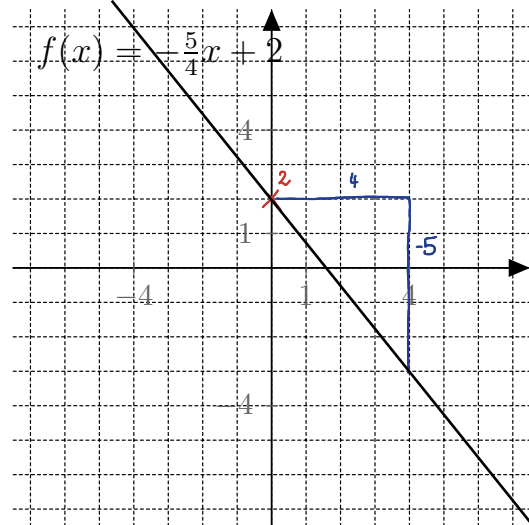
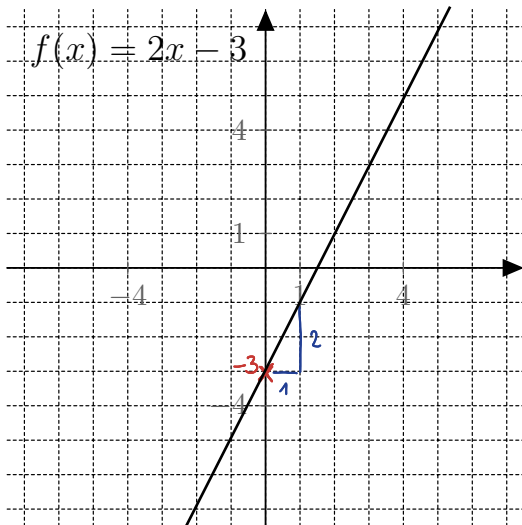


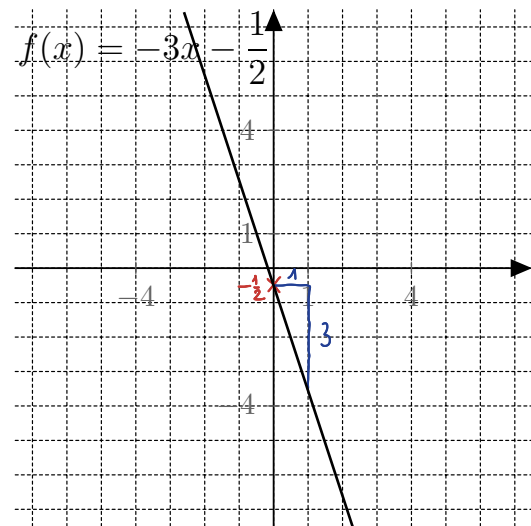
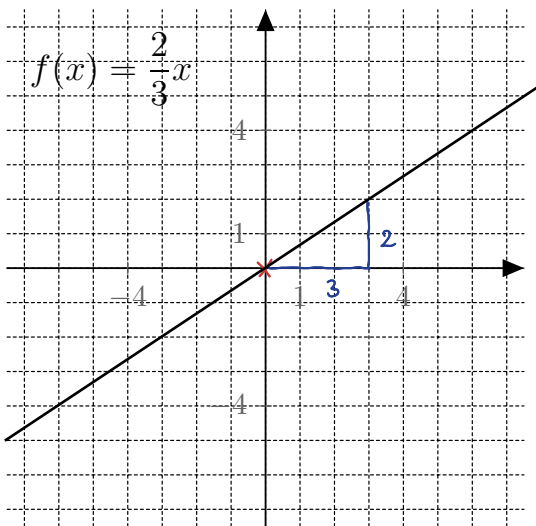
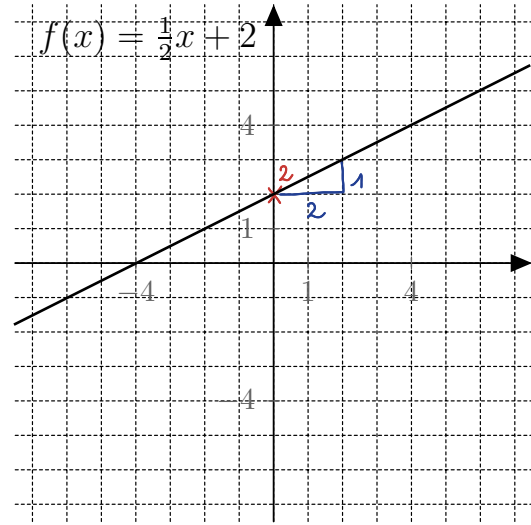
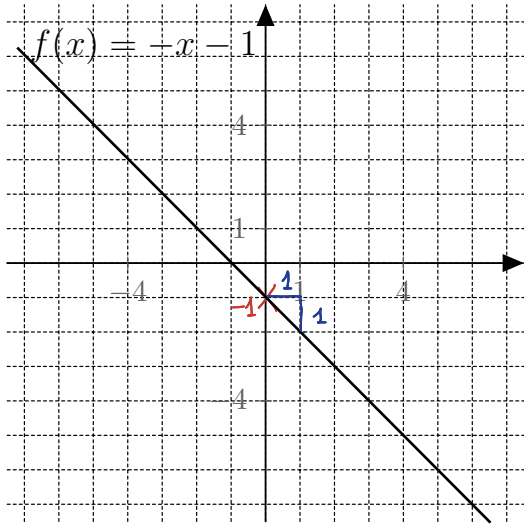
$$f(x) = -2x - 2$$



3.17

Dessiner les fonctions suivantes sans utiliser de tableau de valeurs.





**3.18**

Soit  $f$  la fonction dont le graphe est donné ci-dessous.

